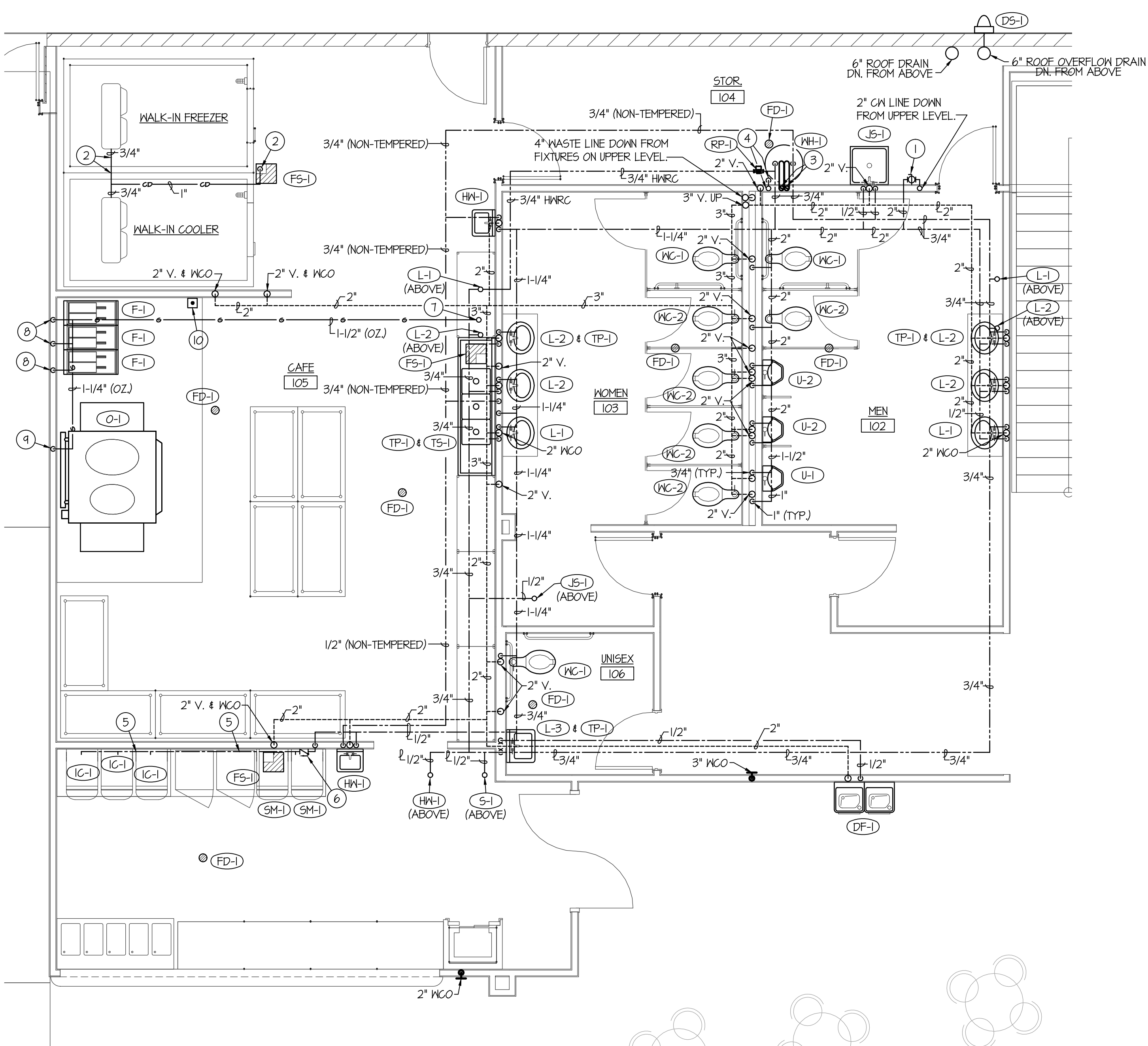
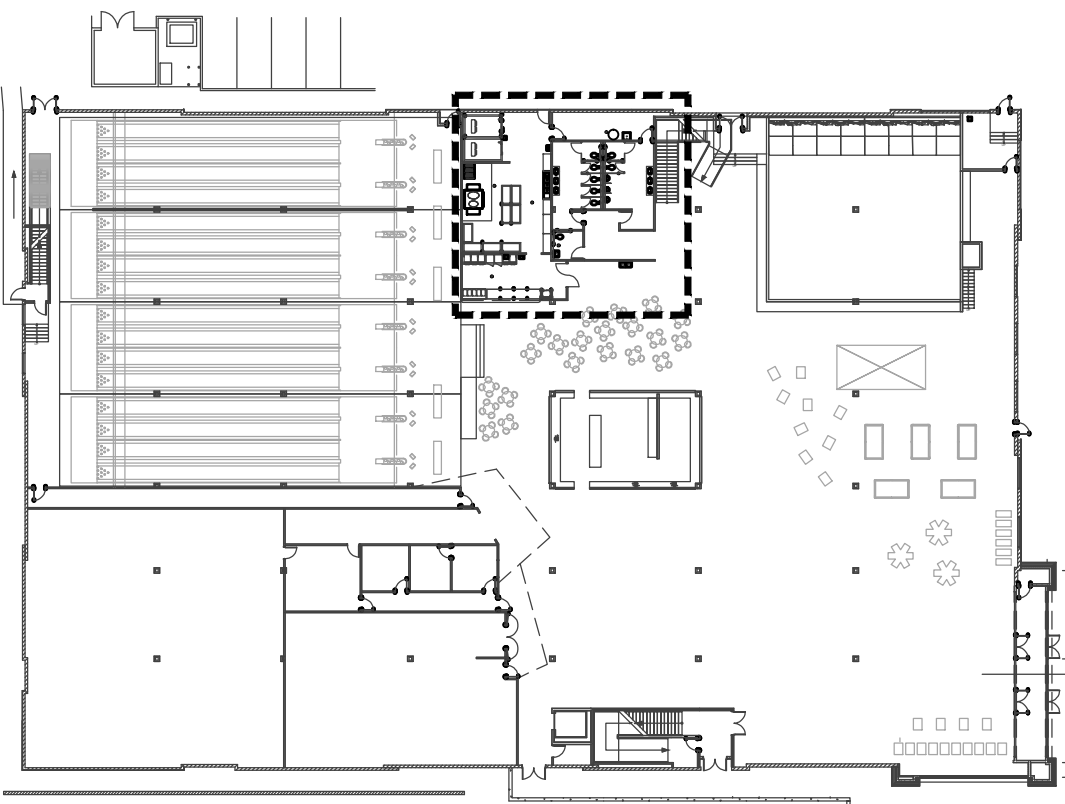


FIXTURE SCHEDULE					
SYM.	DESCRIPTION	HOT	COLD	WASTE	VENT
(DF-1)	BI-LEVEL DRINKING FOUNTAIN - ELKAY MODEL EZ-STL8WELK WITH EZH2O BOTTLE FILLER FLEXI-GUARD BUBBLERS, 1/2" STOP AND 1-1/2" P-TRAP. PROVIDE ALL INTERCONNECTING PIPING AND DRAIN.	1/2"	1/2"	1-1/2"	1-1/2"
(DS-1)	ROOF DRAIN DOWN SPOUT - JAY R SMITH MODEL 11710 SIZE 6" WITH ROUGH BRONZE FINISH AND 6" DRAIN LINE CONNECTION.	---	---	6"	---
(F-1)	GAS FRYER - SUPPLIED BY OWNER. PLUMBING CONTRACTOR TO CONNECT 3/4" GAS LINE COMPLETE WITH SHUT-OFF VALVE, FLEXIBLE CONNECTION AND DIRT LEG. SEE FLOOR PLANS, 120,000 BTU CAPACITY EACH.	---	---	---	---
(FD-1)	2" FLOOR DRAIN WITH PRIMER - ZURN Z-415B WITH 5"Ø NICKEL-BRONZE STRAINER AND 2" DEEP SEAL P-TRAP WITH ZURN 1022 TRAP PRIMER.	---	---	2"	2"
(FS-1)	FLOOR SINK - ZURN Z-1400-KC WITH WHITE ENAMEL FINISH, DOME STRAINER AND 4" DEEP SEAL P-TRAP. PROVIDE 3/4" GRATE OVER SINK.	---	---	4"	2"
(HS-1)	ADA WALL MOUNTED HAND WASH SINK - KOHLER 2023 "GREENWICH" (SIZE 20"x18") WITH K-7115 OPEN GRID STRAINER, MOEN L4601 FAUCET, 1/2" STOPS AND 1-1/2" P-TRAP. PROVIDE INSULATING JACKET ON WATER AND WASTE PIPE. PROVIDE CONCEALED ARM CARRIER SYSTEM.	1/2"	1/2"	1-1/2"	1-1/2"
(IC-1)	ICEE MACHINE - SUPPLIED BY OWNER. PLUMBING CONTRACTOR TO CONNECT 3/8" CN LINE TO UNIT AND 3/4" DRAIN LINE FROM UNIT TO FLOOR SINK LOCATED UNDER CABINET AND TERMINATE WITH DOWNTURNED 90° ELBOW AND AIRGAP.	---	3/8"	3/4"	---
(JS-1)	FLOOR MOUNTED SERVICE SINK - MUSTEE MODEL 63M 24"x24"x10" FLOOR SINK, KOHLER K-8428 FAUCET ASSEMBLY & K-9142 STRAINER & DEEP SEAL P-TRAP.	1/2"	1/2"	2"	2"
(L-1)	ADA COUNTERTOP LAVATORY - KOHLER MODEL K-2405-4 SELF-RIMMING "FARMINGTON" WITH MOEN L4601 LEVER FAUCET, K-7115 OPEN GRID STRAINER, 1/2" BALL STOPS AND 1-1/4" P-TRAP. PROVIDE INSULATING JACKET ON HW PIPING AND P-TRAP.	1/2"	1/2"	1-1/2"	1-1/2"
(L-2)	COUNTERTOP LAVATORY - KOHLER MODEL K-2405-4 SELF-RIMMING "FARMINGTON" WITH MOEN L4601 LEVER FAUCET, K-7115 OPEN GRID STRAINER, 1/2" BALL STOPS AND 1-1/2" P-TRAP.	1/2"	1/2"	1-1/2"	1-1/2"
(L-3)	ADA WALL MOUNTED LAVATORY - KOHLER 2023 "GREENWICH" (SIZE 20"x18") WITH K-7115 OPEN GRID STRAINER, MOEN L4601 FAUCET, 1/2" STOPS AND 1-1/2" P-TRAP. PROVIDE INSULATING JACKET ON WATER AND WASTE PIPE. PROVIDE CONCEALED ARM CARRIER SYSTEM.	1/2"	1/2"	1-1/2"	1-1/2"
(OD-1)	ROOF OVERFLOW DRAIN - JAY R SMITH MODEL 1080 SIZE 6" WITH 2" HIGH WATER DAM, UNDERDECK CLAMP AND FLASHING.	---	---	6"	---
(O-1)	GAS OVEN - SUPPLIED BY OWNER. PLUMBING CONTRACTOR TO CONNECT 3/4" GAS LINE COMPLETE WITH SHUT-OFF VALVE, FLEXIBLE CONNECTION AND DIRT LEG. SEE FLOOR PLANS, 450,000 BTU CAPACITY.	---	---	---	---
(RD-1)	ROOF DRAIN - JAY R SMITH MODEL 1010 SIZE 6" WITH UNDERDECK CLAMP AND FLASHING.	---	---	6"	---
(RP-1)	CIRCULATING PUMP - GRUNDFOS MODEL UP15-10BT1 BRONZE PUMP WITH 3/4" FLANGES (2 GPM @ 5' OF HEAD) 120/60/1	3/4"	---	---	---
(S-1)	SINGLE COMPARTMENT SINK - ELKAY MODEL LK-1418 STAINLESS STEEL SINK WITH LK02438BH HI-ARC FAUCET WITH WRIST BLADE HANDLES, LK35 D10 STRAINER, 1/2" STOPS AND 1-1/2" P-TRAP.	1/2"	1/2"	1-1/2"	1-1/2"
(SM-1)	SODA MACHINE - SUPPLIED BY OWNER. PLUMBING CONTRACTOR TO CONNECT 3/8" CN LINE TO EACH UNIT AND 3/4" DRAIN LINE FROM EACH UNIT TO FLOOR SINK LOCATED UNDER CABINET AND TERMINATE WITH DOWNTURNED 90° ELBOW AND AIRGAP.	---	3/8"	3/4"	---
(SP-1)	SUMP PUMP - GRUNDFOS MODEL CG5A1 UNILIFT WITH 5 GPM AT 15' HEAD. PROVIDE 8'-0" LONG CORD (120/60/1) PUMP TO BE DELIVERED TO OWNER TO USE IN CASE OF EMERGENCY FOR ELEVATOR PIT FLOODING.	---	---	1-1/4"	---
(TS-1)	3 COMP. SINK WITH GOOSENECK FAUCET - ELKAY E3C16X20-2-18X WITH (1) LK 940 ARC TUBE FAUCET AND (3) BASKET STRAINERS. COMPLETE WITH BALL STOP VALVES AND 5.5. BRAIDED SUPPLIES AND 2" WASTE TO FLOOR SINK BELOW.	1/2"	1/2"	2" TO (FS-1)	2"
(U-1)	ADA WALL MOUNTED URINAL - KOHLER K-4484-T "FRESHMAN" WITH WALL CARRIER & SLOAN REGAL BATTERY FLUSH VALVE. MOUNT AT ADA LEVEL.	---	3/4"	2"	2"
(U-2)	WALL MOUNTED URINAL - KOHLER K-4484-T "FRESHMAN" W/ WALL CARRIER & SLOAN REGAL BATTERY FLUSH VALVE.	---	3/4"	2"	2"
(WC-1)	ADA FLUSH VALVE WATER CLOSET - KOHLER K-4368 "HIGHCLIFF" WITH ELONGATED BOWL, K-4610C WHITE OPEN FRONT SEAT, SLOAN REGAL BATTERY FLUSH VALVE AND BOLT CAPS.	---	1"	4"	2"
(WC-2)	FLUSH VALVE WATER CLOSET - KOHLER K-4350 "WELCOMME" W/ ELONGATED BOWL, K-4610C WHITE OPEN FRONT SEAT, SLOAN REGAL BATTERY FLUSH VALVE & BOLT CAPS.	---	1"	4"	2"
(WH-1)	GAS WATER HEATER - A.O. SMITH MODEL GPVX-15L HEATER WITH 120 VOLT POWER CORD, AMTROL ST-5 EXPANSION TANK, T&P VALVE. 76,000 BTU INPUT	3/4"	3/4"	---	---



MAIN LEVEL TOILET ROOMS LARGE SCALE & KITCHEN AREA WATER, GAS & VENT PIPING PLAN

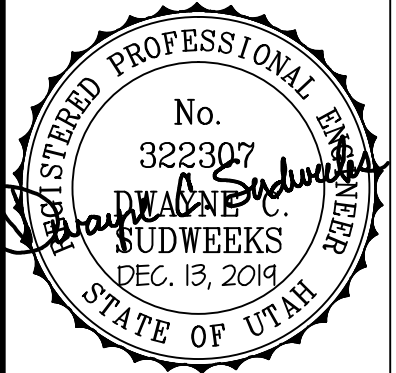
SCALE: 1/4" = 1'-0"



KEY PLAN
NO SCALE

PLAN NOTES:

- INSTALL BALL TYPE ISOLATION VALVE IN 2" CN MAIN IN ACCESSIBLE LOCATION TO ISOLATE MAIN LEVEL PLUMBING FIXTURES.
- RUN 3/4" CONDENSATE DRAIN LINE FROM COOLER / FREEZER INTO 1" CONDENSATE DRAIN MAIN LINE. RUN 1" MAIN LINE EXPOSED AT CEILING OF COOLER AND DROP EXPOSED ON EXTERIOR OF COOLER TO FLOOR SINK. TERMINATE AT FLOOR SINK WITH 90° DOWNTURNED ELBOW COMPLETE WITH AIRGAP. ALL CONDENSATE PIPING LOCATED IN COOLER / FREEZER TO BE HEAT TRACED AND INSULATED.
- RISE (2) 3"Ø WATER HEATER FLUES UP IN WALL TO ROOF ABOVE. SEE LARGE SCALE PLUMBING PLANS ON SHEET P201 FOR CONTINUATION OF FLUES.
- 3/4" 2 PSI GAS LINE DN. FROM ROOF ABOVE. INSTALL 2 PSI TO OZ. REGULATOR ON 3/4" 2 PSI GAS LINE SIZED FOR ACTUAL BTU LOAD OF WATER HEATER SUPPLIED. VENT REGULATOR TO THE EXTERIOR AS REQUIRED. CONNECT 3/4" OZ. GAS LINE TO WATER HEATER COMPLETE WITH SHUT-OFF VALVE, DIRT LEG AND FLEXIBLE CONNECTION. SEE DETAIL ON SHEET P300.
- INSTALL 1/2" CN LINE EXPOSED UNDER COUNTERTOP OF CABINETS TO SERVE (3) ICEE MACHINES AND (2) SODA MACHINES.
- INSTALL 1/2" BACKFLOW PREVENTOR ON 1/2" CN MAIN LINE SERVING (3) ICEE MACHINES AND (2) SODA MACHINES. INSTALL BACKFLOW PREVENTOR UNDER CABINET IN ACCESSIBLE LOCATION AND RUN DRAIN TO FLOOR SINK WITH AIR GAP.
- 1-1/2" (OZ) GAS LINE DN. FROM ABOVE TO SERVE KITCHEN EQUIPMENT. SEE SHEET P102 AND P201 FOR CONTINUATION OF PIPING.
- DROP 3/4" (OZ) GAS LINE DOWN IN WALL BEHIND FRYER AND CONNECT TO FRYER COMPLETE WITH SHUT-OFF VALVE AND FLEXIBLE CONNECTION. FIELD VERIFY EXACT HEIGHT OF FRYER AND FINAL LOCATION.
- DROP 1-1/4" (OZ) GAS LINE DOWN IN WALL BEHIND PIZZA OVEN AND CONNECT TO OVEN COMPLETE WITH SHUT-OFF VALVE AND FLEXIBLE CONNECTION. FIELD VERIFY EXACT HEIGHT OF OVEN AND FINAL LOCATION.
- INSTALL EMERGENCY GAS SHUT-OFF PUSH BUTTON ON WALL NEXT TO FRYERS AND INTERLOCK WITH GAS SOLENOID VALVE ON ROOF SERVING ALL GAS FIRED KITCHEN EQUIPMENT. SEE SHEET P102 FOR SOLENOID VALVE LOCATION.



Engineered Systems Associates
1355 EAST CENTER
POCATELLO, IDAHO 83201
PHONE: (208) 233-0501
FAX: (208) 233-0529
EMAIL: eso@engsystems.com
ESA JOB NUMBER: 19014

SHEET TITLE:
LARGE SCALE PLUMBING FLOOR PLAN

SHEET NUMBER:

P200

DO NOT SCALE DRAWING



SCALE:

REV	DATE	DESCRIPTION
1	12-13-19	BUILDING PERMIT SET

New Building For:
THE RUSH FUNFLEX
JORDAN LANDING
WEST JORDAN CITY, UTAH 84084

PROJECT:

PROJECT: